

CLARK

SERIES 15-25



⚡ **SERIES** ⚡
15/17/20/25

Max Load Capacity
3000/3500/4000/5000 lbs.
(1360/1588/1814/2268 kg)

OVERVIEW

01

UNMATCHED COMFORT. UNRIVALED CONTROL.

The SES is engineered for all-day efficiency, providing operators of all sizes with ample space to work comfortably. Its natural 90° stance positions the hands outboard of the body, allowing for effortless visibility in busy environments.

A synchronized armrest and joystick control adjust together, ensuring optimal hand and arm alignment at any height. The cupped armrest cradles the arm, making it easy to maintain a centered, ergonomic grip on the joystick for precise control.

For superior shock absorption, the SES features a floating floor with multiple isolators—minimizing fatigue and reducing the wear and tear seen in forklifts that rely on a single shock-absorbing cylinder. A recessed footrest allows operators to adjust their stance freely for added comfort.

Designed with convenience in mind, the SES includes built-in storage trays, a phone holder, a cupholder, and a spring-loaded clipboard, keeping essentials within easy reach.

Whether navigating demanding tasks or spending hours on the job, the SES delivers an ergonomic advantage that enhances comfort, boosts productivity, and keeps operators performing at their best.





“

OUR FORKLIFTS DON'T TAP OUT AT FULL LIFT HEIGHT,
100% CAPACITY
UP TO: **188"**

FEATURE

02

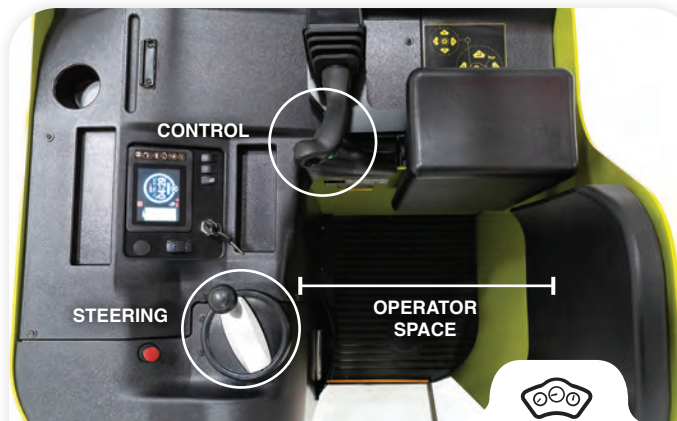
PRECISION CONTROL MEETS ULTIMATE COMFORT

The intuitive joystick control simplifies operation, allowing seamless tilting, lifting, and lowering—with the ability to perform two functions simultaneously for enhanced productivity. Its ergonomic 2-way contoured shape naturally fits the hand, ensuring all-day comfort and reducing strain.

Advanced electric steering provides just the right amount of assist at any speed, delivering a firm, responsive feel for precise tracking and confident maneuvering.

For superior visibility, the sloped front angle and patented nested I-beam mast design offer an unobstructed downward and forward view, improving safety and awareness in high-traffic workspaces.

The SES is engineered for efficiency, precision, and operator comfort—because better control means better performance.



Operator Compartment

- Cushion is 25" tall, remains easy to reach at ALL positions.
- 2 large cushions for operator comfort.
- Floating floor with shock absorbing isolators reduces operator fatigue.



Optimal Driving Stance

Maintain a natural stance with hands comfortably apart for better control, visibility, and easy maneuvering in busy areas.

NATURAL
90°
STANCE

- The armrest and control adjust together.
- The control remains easy to reach at ALL positions.

FEATURE 03

SMART DASH

Intelligent Monitoring at Your Fingertips

The 5-inch color LCD display puts critical safety, efficiency, and performance insights front and center while protecting your truck from unnecessary wear and tear.

Customize your truck with programmable travel speed limits, turtle mode speeds, operator access codes, and low battery alerts. Automatic dealer contact prompts help ensure swift issue resolution, minimizing downtime.

Smart Dash restricts shifting until the truck slows to a preset speed to prevent shift shock, protecting transmission components from premature wear.

Technicians benefit from real-time diagnostics displayed directly on the screen, eliminating the need to open service hatches or manually inspect components. Integrated with the CAN bus system, Smart Dash ensures seamless communication across all truck systems for reliable, data-driven performance.



Programmable Features

- Turtle mode to limit travel speed.
- Limit maximum travel speed.
- Decrease Shock Shift (prevents shifting at excess speeds that shocks transmission parts).
- Low battery level alarm.
- Dealer contact information provided when error occurs.



Service Truck Through Smart Dash

Eliminates need to open the service hatch to physically access truck components.

3 Power Modes

ECONOMY:	Lowest Energy Use
STANDARD:	Middle Performance
POWER:	Maximum Performance



FEATURE
04

UNMATCHED STRENGTH,
STABILITY, & EFFICIENCY

The SES is built for durability and peak performance, delivering superior stability with patented, industry-leading nested I-beam masts engineered for greater strength than traditional C-channel designs.

With exceptional capacity retention, this forklift maintains more weight capacity at higher fork heights, eliminating the need for a higher-capacity truck and reducing overall investment costs. The 8-roller carriage—featuring six vertical rollers and two side thrust rollers—minimizes mast wobble, giving operators the confidence to handle heavy loads efficiently.

The maintenance-free electric braking system reduces operating costs with no service requirements, no brake pads to replace, and no risk of oil leaks. Its energy-efficient design extends battery runtime and lowers energy costs.



**Class Leading Mast
Strength & Stability**

- Capacity Retention At Higher Heights.
- No Need To Buy Higher Capacity Truck.
- Increased Mast Stability.
- Operator Confidence For Fast Maneuvering.
- Full capacity lift up to 188"



**8 Roller Carriage &
I Beam Mast**

CAPACITY
RETENTION
188"

- 8 Roller Carriage**
- 6 Vertical Rollers
 - 2 Side Thrust Rollers

I Beam Masts
Superior strength vs.
C channel masts



**Electric
Brakes**

- Low Cost of Ownership**
- Minimal to no service needed
 - No brake pads to wear
 - No oil to leak
 - Energy efficient

Lithium-Ion Battery



The 36V lithium-ion battery, available directly from the factory, increases ROI, decreases downtime, and retains higher sustained power with no voltage drop-off during operation. Additional features of the lithium-ion battery include:

- Virtually maintenance-free, with no watering or battery swapping required.
- Provides a safer working environment with no acid to leak.
- Longer battery life, requiring fewer replacements.
- CLARK Fusion option is available.

Designed for reliability, the SES features a fully welded frame, providing exceptional durability compared to competitor bolt-together designs. For easy servicing, the front cover opens for quick access to wiring, fuses, and controllers, minimizing downtime and simplifying maintenance.

Backed by an industry-leading full warranty of 2 years or 4,000 hours, the SES is engineered to deliver strength, stability, and efficiency you can trust—every shift, every day.

FEATURE
05

ADVANCED SAFETY SYSTEMS

Confidence and Control

The SES has intelligent safety features that protect operators and cargo, ensuring a secure and productive work environment.

To maintain safe operation, the SES uses real-time fork height monitoring to automatically adjust travel speed, lift speed, and tilt range, preventing unsafe movements. Additionally, lifting is restricted when the mast is tilted beyond a safe range. A suite of integrated safety systems further enhances protection:

Automatic Shutoff for Unsafe Operator Position – If an operator steps on the safety bar in an unsafe position, the truck immediately disables operation.
Operator Presence Switch – The truck will not travel or lift unless the operator's foot is correctly positioned. If removed, the parking brake automatically engages.

Self-Activating Parking Brake – Engages automatically when the truck is powered off.
Anti-Rollback System – When stopped on an incline, the motor prevents the truck from rolling backward.

Curve Control System – Automatically reduces speed in turns, minimizing tipping risks.
Automatic Fork Leveling Control – Ensures forks are perfectly aligned with the floor, preventing spills, reducing pallet damage, and improving efficiency.

With these advanced safety innovations, the SES delivers exceptional control, stability, and peace of mind in every operation. The CLARK Smart Telematics is an available option.



Tilt Related Safety Limits

- Speed and range of tilt
- Travel speed
- Lift Restrictions



Safety Shut Offs: Safety Brakes

Shutoff for Unsafe Operator Position. If operator is in an unsafe position with a foot depressing the safety bar, the truck is disabled.

Operator Presence Switch

- Truck cannot travel or lift unless operator's foot is safely positioned.
- If foot is removed from presence switch during operation, the parking brake engages.



Automatic Fork Leveling

- Automatically tilts mast to position forks level with floor.
- Reduces chance of spilling loads, pushing pallets off racks, damaging pallets, injuring operators.
- Improves operator productivity.



Curve Control

- Automatically limits speed in turns.
- Reduces the risk of tipping when cornering.





“ Full Comfort Shift, Full Capacity Lift.



ADVANCED SYSTEMS FOR CONFIDENCE & PERFORMANCE

The SES is built with advanced features that enhance control, safety, and efficiency in every shift.

Standard LED lights provide bright, energy-efficient illumination for improved visibility in low-light conditions. The load weight indicator ensures precise handling, reducing the risk of overload and enhancing operational efficiency.

The SES includes a fire extinguisher, and an emergency stop button for added safety, offering immediate response options in critical situations. Red boundary lights create a highly visible safety zone around the truck, increasing awareness for pedestrians and nearby workers.

The SES features a built-in fan to keep operators cool in hot conditions and a USB port to keep devices powered throughout the shift, enhancing operator comfort.

With these intelligent enhancements, the SES delivers a safer, more innovative, and more efficient operation in any work environment.

SES15-25 SPEC SHEET

		1		Manufacturer		CLARK		CLARK		CLARK		CLARK	
SPECIFICATIONS	2	Model		SES15		SES17		SES20		SES25			
	3	Drive Unit		Elec - 36V / 48V		Elec - 36V / 48V		Elec - 36V / 48V		Elec - 36V / 48V			
	4	Operator type		Stand - On		Stand - On		Stand - On		Stand - On			
	5	Battery Compartment - Standard		Length	in (mm)	13.9 (353)		18.4 (467)		18.4 (467)		20.7 (530)	
				Width	in (mm)	38.8 (985)		38.8 (985)		38.8 (985)		38.8 (985)	
				Height	in (mm)	31.0 (787)		31.0 (787)		31.0 (787)		31.0 (787)	
	6	Battery voltage, nominal capacity		AH/5hr		625 (36V / 48V)		875 (36V) / 625 (48V)		875 (36V) / 625 (48V)		1120 (36V) / 750 (48V)	
	7	Battery weight (min)		lbs (kg)		1590 (721)		2176 (987)		2176 (987)		2460 (1116)	
	8	Load Capacity / rated load		lbs (kg)		3000 (1360)		3500 (1588)		4000 (1814)		5000 (2268)	
	9	Load Center distance, Fork Face to Load CG		in (mm)		24 (610)		24 (610)		24 (610)		24 (610)	
	10	Load Center distance, Center of Drive Axle to Fork Face		in (mm)		14.4 (366)		14.4 (366)		14.4 (366)		14.4 (366)	
11	Wheelbase		in (mm)		44.8 (1139)		49.4 (1254)		49.4 (1254)		51.9 (1317)		
WT	12	Service weight incl. battery (see line 6.5)		lbs (kg)		8289 (3760)		9043 (4102)		9848 (4467)		10260 (4654)	
	13	Axle loading, laden front / rear		lbs (kg)		10117 (4589)	1171 (531)	11122 (5045)	1420 (644)	12125 (5500)	1724 (782)	13885 (6298)	1374 (623)
	14	Axle loading, unladen front / rear		lbs (kg)		4553 (2065)	3737 (1695)	4903 (2224)	4140 (1878)	5016 (2275)	4835 (2193)	5185 (2352)	5075 (2302)
TIRES, CHASSIS	15	Tire type, P=pneumatic, S-solid, C=cushion		C		C		C		C		C	
	16	Tire size, front		18 x 7 x 12.12		18 x 8 x 12.12		18 x 8 x 12.12		18 x 8 x 12.12		18 x 9 x 12.12	
	17	Tire size, rear		9 x 5		9 x 5		9 x 5		9 x 5		9 x 5	
	18	Wheels, number front/rear (x=drive wheels)		2X / 2		2X / 2		2X / 2		2X / 2		2X / 2	
	19	Tread, front		in (mm)		34.6 (878)		33.6 (853)		33.6 (853)		34.6 (878)	
DIMENSIONS	20	Tilt of upright/fork carriage (back / forward)		deg.		6° / 5°		6° / 5°		6° / 5°		6° / 5°	
	21	Height, upright lowered 1,2		in (mm)		82.9 (2108)		82.9 (2108)		82.9 (2108)		82.9 (2108)	
	22	Freelift 1,2		in (mm)		59.0 (1499)		59.0 (1499)		59.0 (1499)		59.0 (1499)	
	23	Lift height 1,2		in (mm)		188.0 (4775)		188.0 (4775)		188.0 (4775)		188.0 (4775)	
	24	Height upright extended 1,2		in (mm)		235.9 (5994)		235.9 (5994)		235.9 (5994)		235.9 (5994)	
	25	Height overheadguard (OHG)		in (mm)		86.8 (2205)		86.8 (2205)		86.8 (2205)		86.8 (2205)	
	26	Height floor to battery bottom		in (mm)		7.2 (184)		7.2 (184)		7.2 (184)		7.2 (184)	
	27	Step height (floor to top of step)		in (mm)		8.5 (216)		8.5 (216)		8.5 (216)		8.5 (216)	
	28	Fork dimensions		in (mm)		1.5 (38) x 4.0 (102) x 42 (1067)		1.5 (38) x 4.0 (102) x 42 (1067)		1.5 (38) x 4.0 (102) x 42 (1067)		1.5 (38) x 4.0 (102) x 42 (1067)	
	29	Fork carriage Class		in (mm)		Class IIA		Class IIA		Class IIA		Class IIA	
	30	Fork carriage width		in (mm)		37 (940)		37 (940)		37 (940)		41 (1041)	
	31	Ground clearance minimum, unloaded		in (mm)		2.0 (51)		2.0 (51)		2.0 (51)		2.0 (51)	
	32	Ground clearance center of wheelbase		in (mm)		4.1 (103)		4.1 (103)		4.1 (103)		4.1 (103)	
	33	Grade clearance		%		39		35		35		33	
	34	Turning radius		in (mm)		53.8 (1366)		58.1 (1477)		58.1 (1477)		60.6 (1538)	
	35	Width (Drive Tire)		in (mm)		41.5 (1055)		41.5 (1055)		41.5 (1055)		43.5 (1106)	
	36	Width (Across Frame)		in (mm)		42.0 (1067)		42.0 (1067)		42.0 (1067)		42.0 (1067)	
	37	Length to face of forks		in (mm)		66.4 (1687)		70.9 (1802)		70.9 (1802)		73.4 (1865)	
38	Right Angle Stack:												
	With 40" (1016) (W) x 48" (1219) (L) pallet and 8" clearance		in (mm)		127 (3226)		132 (3353)		132 (3353)		134 (3404)		
	With 42" (1067) (W) x 48" (1219) (L) pallet and 8" clearance		in (mm)		128 (3251)		132 (3353)		132 (3353)		134 (3404)		
	With 48" (1219) (W) x 48" (1219) (L) pallet and 8" clearance		in (mm)		129 (3277)		133 (3378)		133 (3378)		135 (3429)		

PERFORMANCE	Model	SES15		SES17		SES20		SES25			
	39	Travel speed loaded / unloaded	mph (km/h)	7.3 (11.7)	7.3 (11.7)	7.3 (11.7)	7.3 (11.7)	7.3 (11.7)	7.3 (11.7)	7.3 (11.7)	
40	Lift speed loaded / unloaded	fpm (m/s)	78.7 (0.40)	116.1 (0.59)	68.9 (0.35)	116.1 (0.59)	68.9 (0.35)	116.1 (0.59)	61.0 (0.31)	110.2 (0.56)	
41	Lowering speed loaded / unloaded	fpm (m/s)	100.4 (0.51)	92.5 (0.47)	100.4 (0.51)	92.5 (0.47)	100.4 (0.51)	92.5 (0.47)	100.4 (0.51)	92.5 (0.47)	
42	Max. drawbar pull loaded / unloaded	lbf (N)	3795 (16881)	2308 (10267)	3811 (16956)	2191 (9746)	3813 (16961)	2433 (10822)	3819 (16987)	2453 (10911)	
43	Max. gradeability loaded / unloaded	%	15		15		15		15		
44	Service brake		Electric		Electric		Electric		Electric		
DRIVE LINE	45	Drive motor rating (S2 60min) 48V	kW	6.5		6.5		6.5		6.5	
	46	Drive motor rating (S2 60min) 36V	kW	6		6		6		6	
	47	Lift motor rating (S3 15%) 48V	kW	13.1		13.1		13.1		13.1	
	48	Lift motor rating (S3 15%) 36V	kW	16.8		16.8		16.8		16.8	
	49	Diameter of drive motor	in (mm)	7.8 (200)		7.8 (200)		7.8 (200)		7.8 (200)	
	50	Diameter of hydraulic motor	in (mm)	7.8 (200)		7.8 (200)		7.8 (200)		7.8 (200)	
	51	Drive motor control		AC / Inverter		AC / Inverter		AC / Inverter		AC / Inverter	
	52	Speed control		AC / Inverter		AC / Inverter		AC / Inverter		AC / Inverter	
53	Hydraulic motor control		AC / Inverter		AC / Inverter		AC / Inverter		AC / Inverter		
MISC.	54	Operating pressure for attachments	psi (kg/cm ²)	Adjustable		Adjustable		Adjustable		Adjustable	
	55	Oil volume for attachments	gpm (l/min)	9.0 (34.1)		9.0 (34.1)		9.0 (34.1)		9.0 (34.1)	
	56	Sound level, driver's ear according to DIN 12053	dB(A)	70.0		70.0		70.0		70.0	

UPRIGHT TABLE SES15-25

Maximum Fork Height		Overall Height Lowered		Overall Height Raised		Free Lift**		Standard Tilt Spec‡
in	mm	in	mm	in	mm	in	mm	B° / F°
SES15/17/20/25 Triple Stage								
188	4775	83.0	2108	236	5994	59.0	1499	5 / 6
199	5055	89.0	2261	247	6274	65.0	1651	5 / 6
214	5436	95.0	2413	262	6655	68.0	1727	5 / 6
226	5740	99.0	2515	274	6960	75.0	1905	5 / 6
SES15/17/20/25 Quad								
240.5	6109	83.0	2108	289	7328	57.0	1448	3 / 6
258.5	6566	89.0	2261	307	7785	63.0	1600	3 / 6
276.5	7023	95.0	2413	325	8242	71.0	1803	3 / 6

BATTERY COMPARTMENT DIMENSIONS

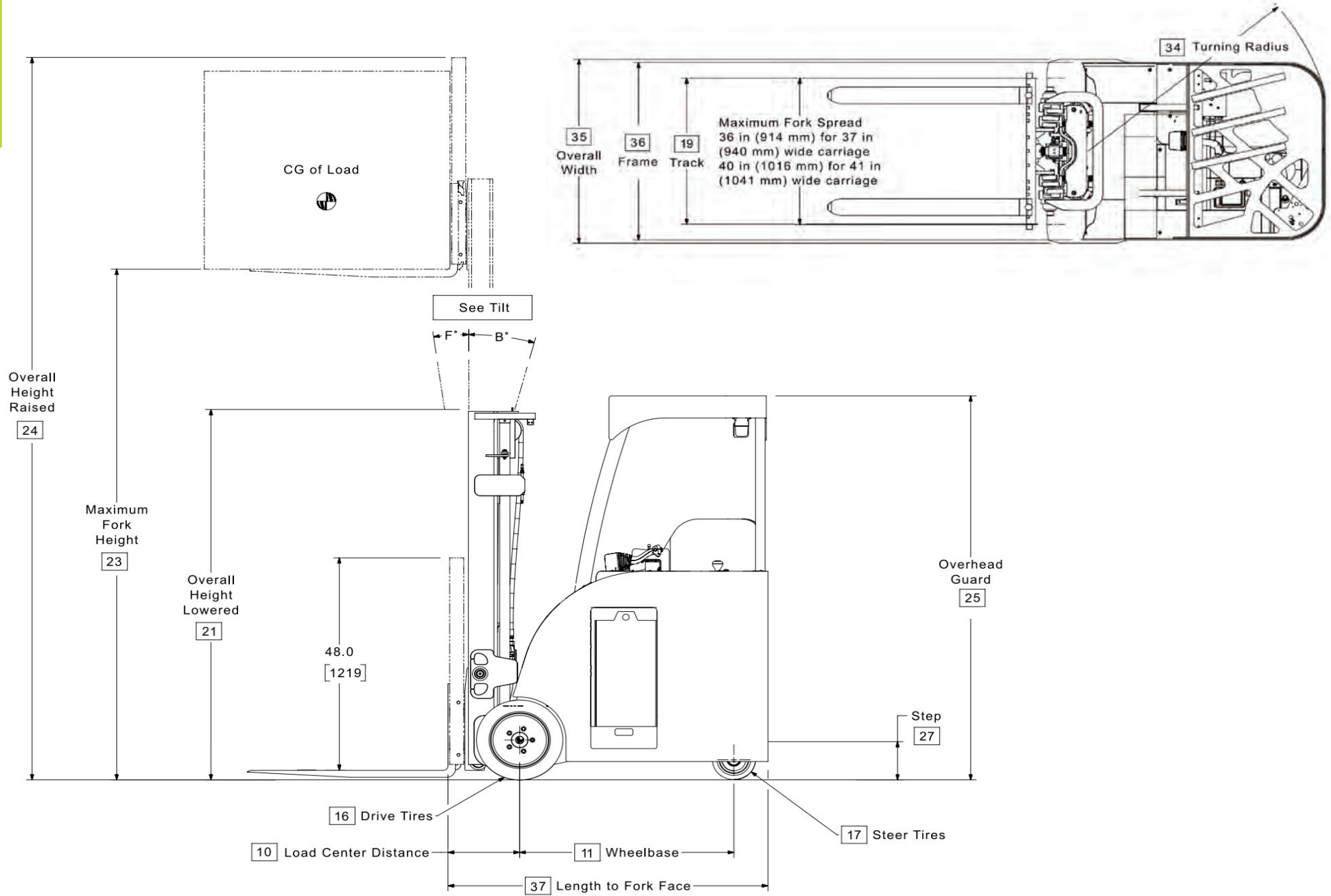
Width (W)		Length (L)		Height (H)	
in	mm	in	mm	in	mm
SES15					
38.8	986	13.88	353	31.0	787
38.8	986	18.38	467	31.0	787
SES17					
38.8	986	18.38	467	31.0	787
SES20					
38.8	986	18.38	467	31.0	787
38.8	986	20.88	530	31.0	787
SES25					
38.8	986	20.88	530	31.0	787

• Indicates preferred standard sizes. For overall height raised with load backrest,

** All freelif dimensions shown without standard 48 in. (1220mm) high load backrest

‡ Standard tilt shown. Contact CLARK representative for information on optional tilt.

DIMENSIONS





CLARK

20 

 **SERIES**

CLARK
HOPE

EXIT

ABOUT CLARK

With over one million CLARK lift trucks sold around the world, each is a testament to the CLARK time-tested process of designing durable trucks with precise features that meet or exceed the material handling needs of our customers. Our full range of highly dependable products – from pallet jacks and electric narrow aisle order pickers to our 18,000lb capacity lift trucks - assure end-users that CLARK has the solutions for their day-to-day demands.

These customer-focused solutions are built from numerous industry innovations – from the nested I-Beam to a self-activating parking brake to new on-board diagnostics – and these all began the same way: with customers' needs foremost in mind. By focusing on how we can improve our customers' material handling processes, and combining that with award-winning dealers and parts support, Clark provides assure our customers a lift truck designed to be the right solution for their individual requirements.

To Find Your Nearest Authorized CLARK Dealer, Visit Our Website

www.clarkmhc.com



CLARK MATERIAL HANDLING COMPANY

Global Headquarters
101 Lakeside Parkway • Flower Mound, TX 75028
1-859-422-6400 • www.clarkmhc.com